

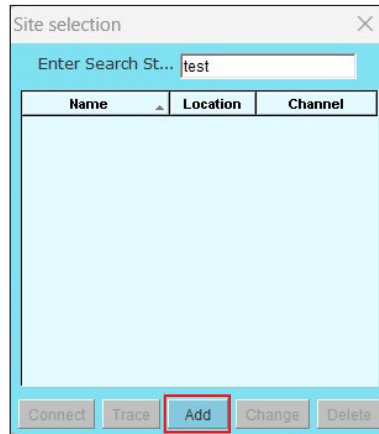
Operating Guide

Remote Connection to AK-PC Pack Controller

Tunneling through AK-SM System Manager in Service Tool

**Remote Connection to AK-PC
Pack Controller**

1. For a new site, start by opening Service Tool and select Add button at bottom.



The 'Site selection' dialog box features a search bar at the top with the placeholder text 'Enter Search St...' and the word 'test' entered. Below the search bar is a table with three columns: 'Name', 'Location', and 'Channel'. The table is currently empty. At the bottom of the dialog, there are five buttons: 'Conned', 'Trace', 'Add', 'Change', and 'Delete'. The 'Add' button is highlighted with a red rectangular border.

2. Configure site setup details, general example below. Ensure network team has opened TCP port (default 1041) for specific IP address.



The 'Site setup' dialog box contains a form with the following fields and values:

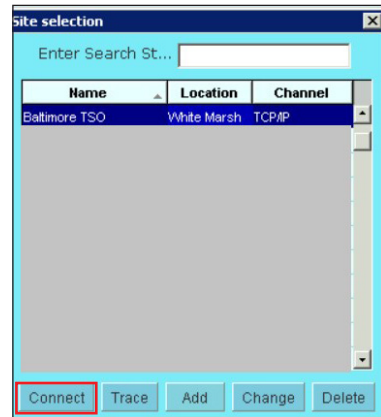
Site name	Site 1234
Site location	
Site type	
Destination name	Supervisor
Pass code	*****
Channel	TCP/IP
Enhanced Security	Off
IP address	192.168.111.123
TCP port	1041

At the bottom of the dialog are 'OK' and 'Cancel' buttons.

Site Name: User Preference**Site location:** User Preference**Site Type:** User Preference**Destination Name:** User Name of **System Manager** credentials**Pass code:** Password of **System Manager** credentials**Channel:** Set as TCP/IP**Enhanced Security:** Network-based, may be on / off**IP address:** IP of System Manager used for tunneling**TCP port:** Port used for tunneling, must be open on network (default 1041 typically used)**Notes:**

1. For sites with multiple system managers, a separate site must be configured in Service Tool per system manager
2. Ensure IT/network team has opened TCP port for each system manager/IP address used for tunneling
3. If user feels setup is correct and unable to connect, try toggling Enhanced Security
4. User must have Supervisor-level system manager credentials to tunnel in

3. Once connection has been created, select from site selection list and press Connect button.



4. Software will now tunnel into Service Tool. Once screen showing pack controller appears (see below), press on icon in left column of pack controller row.



5. This will now bring user to standard pack controller overview screen, where they can navigate same as a local connection.



Danfoss A/S

Climate Solutions • danfoss.com • +45 7488 2222

Any information, including, but not limited to information on selection of product, its application or use, product design, weight, dimensions, capacity or any other technical data in product manuals, catalogues descriptions, advertisements, etc. and whether made available in writing, orally, electronically, online or via download, shall be considered informative, and is only binding if and to the extent, explicit reference is made in a quotation or order confirmation. Danfoss cannot accept any responsibility for possible errors in catalogues, brochures, videos and other material. Danfoss reserves the right to alter its products without notice. This also applies to products ordered but not delivered provided that such alterations can be made without changes to form, fit or function of the product.

All trademarks in this material are property of Danfoss A/S or Danfoss group companies. Danfoss and the Danfoss logo are trademarks of Danfoss A/S. All rights reserved.